

# NEWSLETTER

News updates from Sheringham Community Primary School & Nursery

## IN THIS ISSUE

**From The Music Room**

**Forest School**

**PE News**

**Warhammer**

**Year 3's Trip To Gressenhall**

**Bright Stars**

**Attendance**

**Curriculum News**

**Reception Learning Cafe**

**Safeguarding**

**Welcome to the YESU!**

## TOP WHIZZERS

**A huge well done to the following for some excellent dedication to their maths Whizz. Regularly completing maths whizz will only have a positive impact on mathematical attainment.**

**Top Class for November**

**Upper School: 6P**

**Lower School: 2B**

**Top individual for November**

**Upper School: Ava S 6P**

**Lower School: Pixie G 2B**



## MESSAGE FROM THE HEADTEACHER

Dear Families,

November seems to have flown by and, as I'm sure you can imagine, we are now well into the preparations for the festive period! Lots of lovely singing and performing can be seen and heard all around the school.

Last week had also been particularly busy for us with our OFSTED visit. We will let you know the outcome as soon as the report is published. Thank you to everyone for your support over this.

Our mufti day in aid of the local food bank was a real success, the donations given will help many, many people.

I look forward to seeing many of you and your wider families during our Christmas performances.

## FROM THE MUSIC ROOM

It's been another busy half term-term in the music room.

In class the children have been enjoying performing and composing on a variety of instruments including body percussion, tuned and un-tuned percussion.



- Year 1 have been working on 'Name Rhythms' using body percussion.
- Year 2 'Material Rhythms' using body and untuned percussion.
- Year 3: The Wacky Races' using car names from the cartoon series to create rhythmic patterns.
- Year 4: learning to play Old MacDonald Had a Farm on tuned percussion.
- Year 5: using David Bowie's Space Oddity to create their own melody.
- Year 6: creating melodies based around Nick Cave's The Ship Song.

The children have also been working hard at learning songs for their end of term productions and concerts. We have also reintroduced singing assemblies which have been a great success and a lot of fun.

Here's a reminder of the upcoming events.

- Year 3/4 Carol Concert St Peter's Church 10.00 am 5/12/23.
- Year 5/6 Carol Concert St Peter's Church 1.45 pm 5/12/23
- EACH Carol Concert The Chapel Gresham's School, Holt 6.00 pm 5/12/23.
- Choir to sing at the Christmas Fayre School Hall 3.30 pm 14/12/23.

We look forward to seeing you there.



## FOREST SCHOOL

In Forest School this term the children have enjoyed making dens and treehouses. They have made their own swings and zip-lines. In the craft shed, they have created some beautiful dream catchers, pom-poms and shakers. They have had fun making 'conker comets', and created a fishing game to see how many conkers they could catch!

We have been studying woodland animals' different habitats and enjoyed looking for insects in our bug hunting areas.

They have been cooking up some culinary delights in the mud kitchen, opening their own restaurants and competing against each other in mud kitchen 'Bake Off' events.

We are all looking forward to some Christmas crafts over the next few weeks and enjoying hot chocolate around the campfire!

## PE NEWS

### Multi sports clubs-

The children from multi sports have found a new love for dodgeball and have been playing this and varying the rules each week. It has been brilliant to see the children grow with their ideas for how they can play. We have also played basketball and bench ball.

### PE across the school-

This half term our focus has been on the Social cog and our star words have been 'negotiate & collaborate' the children have been working hard to understand how these worlds fit into our lessons and how to use these new skills to develop their learning goals.

### Sports events-

We have attended lots of events this half term and all of the children have come back into school happy and excited to tell everyone all about what went on and how they scored or received a medal! This is fantastic to hear as the buzz around sport has grown and I would love this to grow even more.

### PE Kits-

Just a quick reminder, now it is turning colder, of the correct PE kit. White t shirt, plain black or navy trackies, plain black or navy jumper. Coats, hats, gloves can be worn to be taken off.

If your child has an inhaler please can you ensure there is one in school and a form filled in.

## WARHAMMER

In Warhammer club this half term the children have begun building their Stormcast Eternal and Space Marine models ready for painting. They have also worked hard to learn the rules of Warcry where they battle their warbands against each other, securing objectives and defeating their opponent. They are very excited to have begun their Warcry league where there is a trophy up for grabs for the winner!



## YEAR 3'S TRIP TO GRESSENHALL

Year 3 had a fantastic time on our Gressenhall Stone Age Day! We explored the three periods of the Stone Age, looking at tools, shelters and the beginning of farming. Year 3 were amazing hunter gatherers! We knapped our own tools and built our own shelters! A wonderful time had by all, well done Year 3!



## BRIGHT STARS

We do have one or two spaces at Bright Stars for breakfast and after school sessions. Please contact the school office for more details.

## ATTENDANCE

We are aware that a bit of a nasty virus has been going around school so this has affected the attendance. Our current attendance level for the whole school is 94.8%. Please remember to check the guidance on the following as to whether your child should come to school: <https://ukhsa.blog.gov.uk/2023/09/08/a-parents-guide-to-keeping-kids-healthy-this-school-year/>

It states: *'it's fine to send your child to school or nursery with a minor cough or common cold if they are otherwise well and does not have a high temperature. But if they have diarrhoea and/or vomiting, they should stay home for ... 48 hours after the last episode.'*

Top Attending Classes for November:

Upper School: 4M

Lower School: 3M

Top Classes for the year so far:

Upper School: 4M

Lower School: 1S

## CURRICULUM NEWS

The CARES curriculum prioritises the personal development of the whole child, learning about developing a sense of belonging in Community, aiming high in Aspiration, tackling challenges in Resilience, and looking after our feelings in Emotional well-being alongside Skills and knowledge from the national curriculum.

For further information on the curriculum, please take a moment to watch our launch video, which can be found here:

<https://www.sheringhamprimary.norfolk.sch.uk/curriculum/cares-curriculum/>

We are thrilled about our curriculum blog, which showcases all of our amazing curriculum work - achieving nearl 11,000 hits so far. Please browse and comment on any of the posts. There are lots of new posts on here so that you can see what the children

have been up to:

<https://www.sheringhamcarescurriculum.blogspot.com/>

Thank you for all of your support with this! It would be lovely to have some comments from parents on some of the posts!

On our website, is the 'Our Curriculum Story' page. Here you can read a brief history of how the CARES curriculum was developed and access all of the most important links that you might need to fully understand our curriculum offer.

There is also a new section which tells you all about how your children are assessed across the curriculum and a section that shows how learning is adapted for those that find some aspects of learning tricky:

<https://www.sheringhamprimary.norfolk.sch.uk/how-do-we-assess-our-children-across-the-cares-curriculum/>

<https://www.sheringhamprimary.norfolk.sch.uk/ambition-for-all/>



## RECEPTION LEARNING CAFÉ

We had a lovely Early Maths Learning Cafe last Friday where the children and their parents engaged in activities around counting, pattern, number recognition and lots more!



Be all that you can be...



## SAFEGUARDING

At Sheringham Community Primary School & Nursery we take the safety of our children very seriously. Safeguarding is everyone's responsibility. If you ever have a concern about a child or adult please speak to any member of staff who will support you, alternatively you can speak with our Designated Safeguarding Lead, Mr Amies.

On our website, there are some helpful links to organisations and services that might be able to provide support for you, should you require, with such things as bereavement, benefits, debt, legal issues and more.

For more information on this, visit the safeguarding section of our website: <https://www.sheringhamprimary.norfolk.sch.uk/our-school/safeguarding/>

Our safeguarding policy is available here:

<https://www.sheringhamprimary.norfolk.sch.uk/our-school/safeguarding/>

We are able to offer support with many family issues, so please do contact Mr Amies, at the school, if you would like to discuss anything that we might be able to

help with.

We also have trained Domestic Violence Champions for Change in school. If anyone would like advice or information on this very sensitive area please contact Mrs Carter or Mr Amies.

In a fairly new section on the Safeguarding page of the school website, there are some links to support 'Challenging Behaviours':



Tel: 0300 666 0126

Email: [support@theCBF.org.uk](mailto:support@theCBF.org.uk)



Tel: 0203 761 7026

Email: [help@clinical-partners.co.uk](mailto:help@clinical-partners.co.uk)



Tel: 0808 800 2222

Email: [askus@familylives.org](mailto:askus@familylives.org)

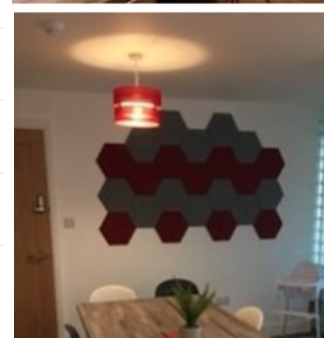
## WELCOME TO YESU!!

### Parent support centre

Tues & Thurs 9.30-12.00.

A place where parents can gather to support each other and access a range of practical based workshops & information.

Dates	Tues AM Drop in Workshop (9.30-12)	Thurs AM Drop-in workshop (9.30-12)
Autumn Term 2	How to support your child with Reading Homework. PM Coffee and chat- cost effective ideas for Christmas	How to support your child with Maths homework.
Spring Term 1	Managing Behaviours that challenge. PM Breast feeding café.	Budgeting.
Spring Term 2	Sleep and bedtime routines. PM Breast feeding café.	How to get the right support if you have, or feel you have, a child with SEND.
Summer Term 1	How we look after ourselves and our wellbeing. PM Breast feeding café.	What is ADHD/ADD and how can you support children with this?
Summer Term 2	Supporting you to support your child with transition to new class / year / school. PM Breast feeding café.	Practical ideas for supporting you with your child over the summer holidays and signposting to local events / activities.



### Christmas Toy & Book Swap

Swap a pre loved book or toy. Please exchange one item at a time.

### The Community Fridge

Tues-Fri 10:30 – 16:00.

### The Uniform Swap Shop

Tues & Thurs 9am-4pm From 2nd Nov.

Open during Parent Support Centre opening times (Tues & Thurs 9.30-3.30). For more info see our [community fridge page](#).

Be all that you can be...

